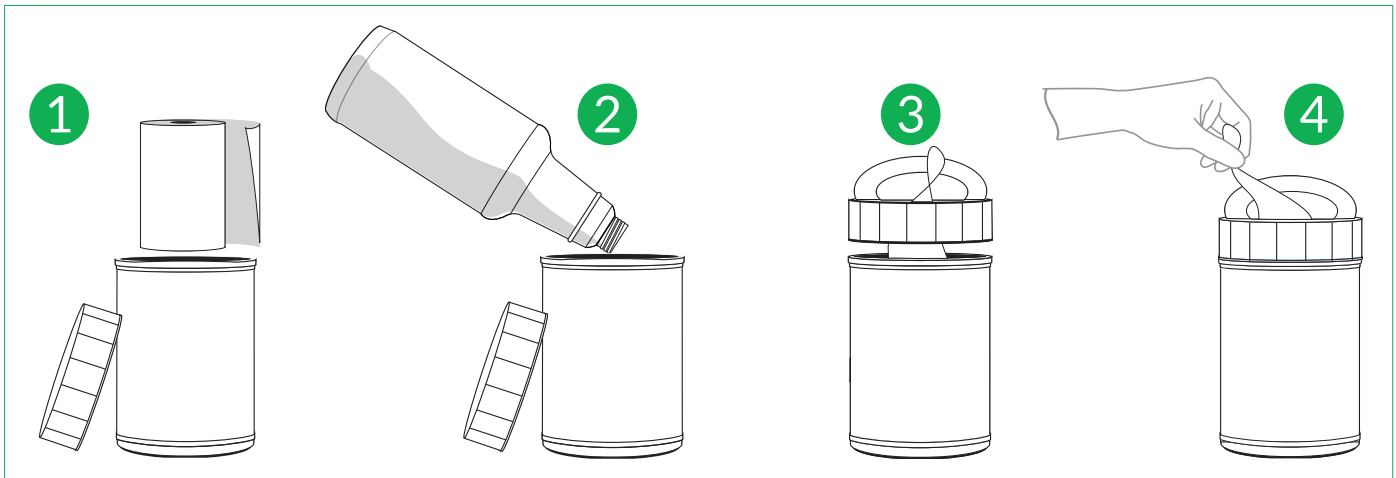




How to Saturate Contec Professional Canister Wipes

Reduce chemical waste while using your preferred cleaning chemical

Please follow the safety and PPE requirements at your facility. These instructions are written for someone using gloves and eye protection. Always wear gloves and eye protection when preparing and using saturated wipes.

1. Insert a dry roll of wipes into canister (or bag). Consult SDS for proper PPE. Read chemical/solution label for instructions and proper use. NOTE: For folded wipes, place the roll with edge up and the unfolded edge down.



2. Carefully pour chemical solution over center of wipe roll in canister (or bag) as noted above. Replace lid. Wait 5 minutes before use to make sure the wipes are properly saturated. After 5 minutes, remove the lid.
3. From the center of the roll, pull a wipe up and carefully thread it through the opening in the canister lid approximately one inch. Replace lid securely.
 -  Apply secondary label, write (with permanent marker) the fill date and chemistry used to saturate the wipes. Do not mix chemistries.
 -  All chemistries used on the wipes need to be checked periodically, with proper indicator strips, to ensure chemical effectiveness.
4. To dispense, open the hinged lid and pull a single, saturated wipe through the opening at an angle. Close the lid to prevent solution leakage or evaporation.

Disclaimer: This instruction sheet is intended for saturating for professional use and not sold for retail.

Contec Professional wipes can be saturated to a variety of levels, serving as a flexible resource for any application in your facility. For use as a cleaning wipe, especially on/near electronics, saturation near the minimum recommended amount will suffice. For products with a stated dwell time, a higher saturation level can help extend surface coverage and/or keep surfaces wet for longer.

Part No.	Description	Size	Recommended saturation range
PRMW0013	ContecClean™ Cloths Perfed roll	10" x 12" (25 x 30.5 cm)	48 oz. - 80 oz. (1.4 L - 2.4 L)
PRMW0069	ContecClean™ Cloths Perfed roll and canister	6" x 9" (15.24 x 23 cm) + 76 oz. (2.3 L) canister	16 oz. - 24 oz. (0.47 L - 0.7 L)
PRMW0070	ContecClean™ Cloths Perfed roll and canister	6" x 9" (15.24 x 23 cm) + 76 oz. (2.3 L) canister	16 oz. - 24 oz. (0.47 L - 0.7 L)
PRMW0075	ContecClean™ Cloths Half fold, perfed roll	10.5" x 12" (26.67 x 30.5 cm)	48 oz. - 64 oz. (1.4 L - 1.9 L)
PRMW0675	ContecClean™ Cloths Half fold, perfed roll and bucket	10.5" x 12" (26.67 x 30.5 cm) + 1-gal. (3.8 L) bucket	48 oz. - 64 oz. (1.4 L - 1.9 L)
PRMW0912	ContecClean™ Cloths Perfed roll	9" x 12" (23 x 30.5 cm)	112 oz. - 200 oz. (3.3 L - 5.9 L)
PRMW0090	ContecClean™ Cloths Perfed roll and bucket	9" x 12" (23 x 30.5 cm) + 3-gal. (11.4 L) bucket	112 oz. - 200 oz. (3.3 L - 5.9 L)
PRMW4008	Unifore® Surface Wipes half fold, perfed roll	10" x 12" (25 x 30 cm)	12 oz. - 16 oz. (0.35 L - 0.47 L)
PRMW4048	Unifore® Surface Wipes half fold, perfed roll	10" x 12" (25 x 30 cm)	12 oz. - 16 oz. (0.35 L - 0.47 L)
PRMW6030	Unifore® Surface Wipes, half fold, perfed roll	10" x 12" (25 x 30 cm)	20 oz. - 24 oz. (0.6 L - 0.7 L)
PRMW0150	Unifore® Surface Wipes, half fold, perfed roll	10" x 12" (25 x 30 cm)	48 oz. - 64 oz. (1.4 L - 1.9 L)